

MOLDES MENDOZA

A COMPANY THAT DESIGNS, ENGINEERING AND
MANUFACTURING MOLDS WITH THE
HIGHEST QUALITY, IN A GLOBAL
MANUFACTURING ECONOMY.

ORIGINS

Moldes Mendoza was founded in 1970
by Don Antonio Mendoza Ruiz
In Guadalajara, Jalisco, México,
It is devoted to making high quality molds.

Our services also include the maintenance
and repair of molds and spare parts.

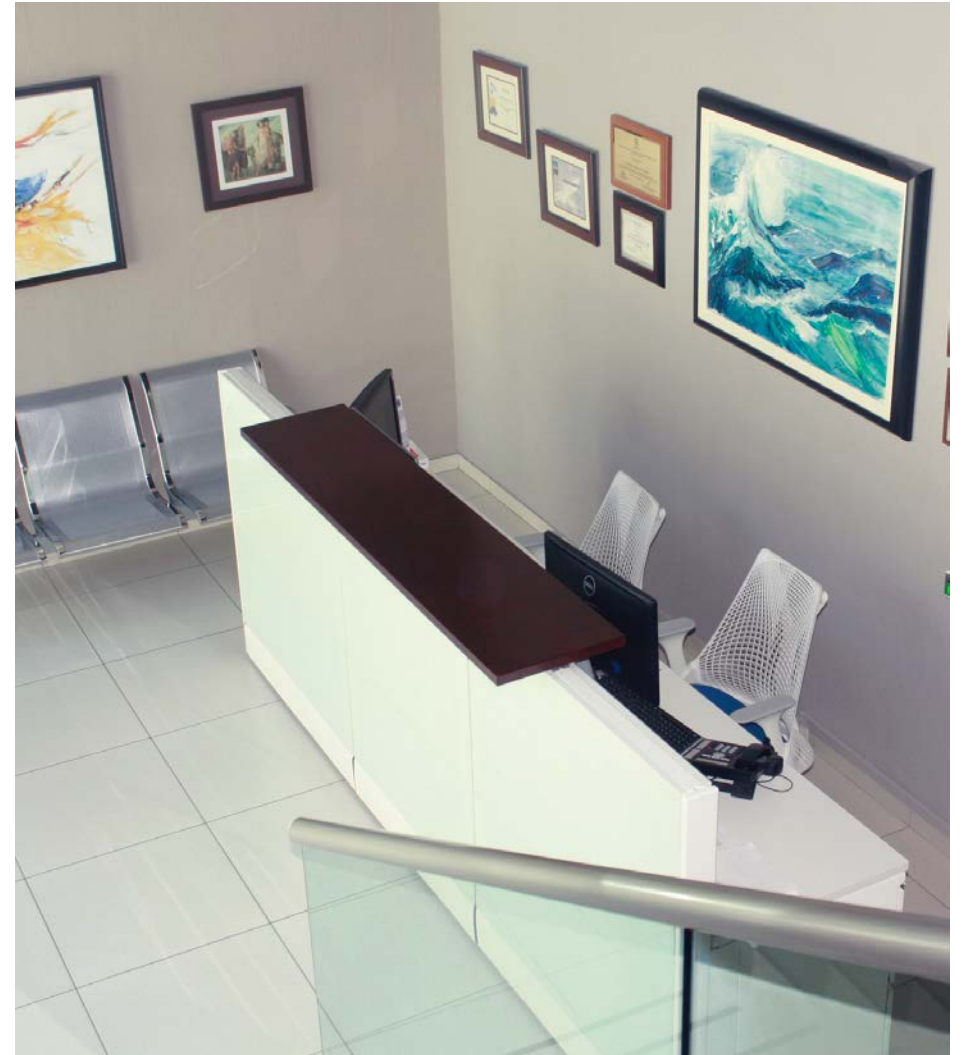


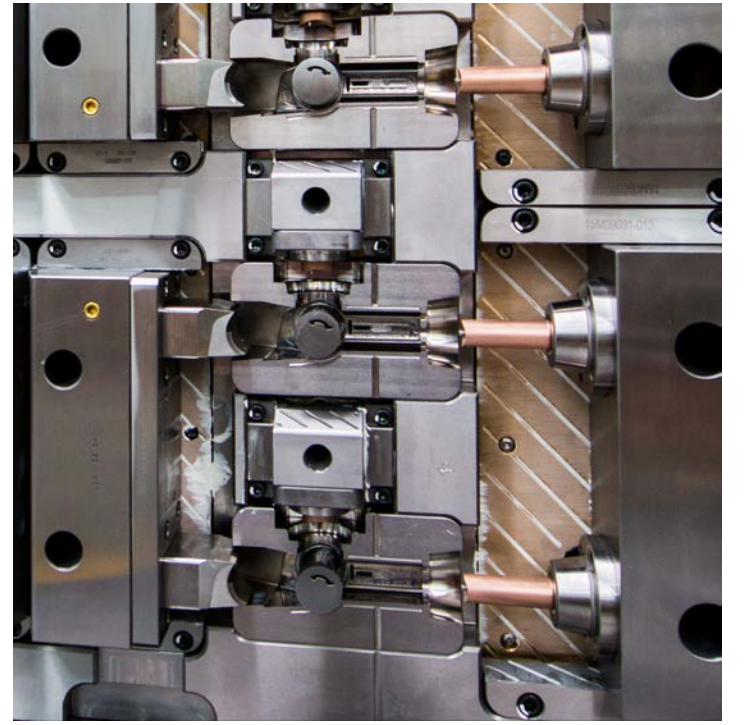
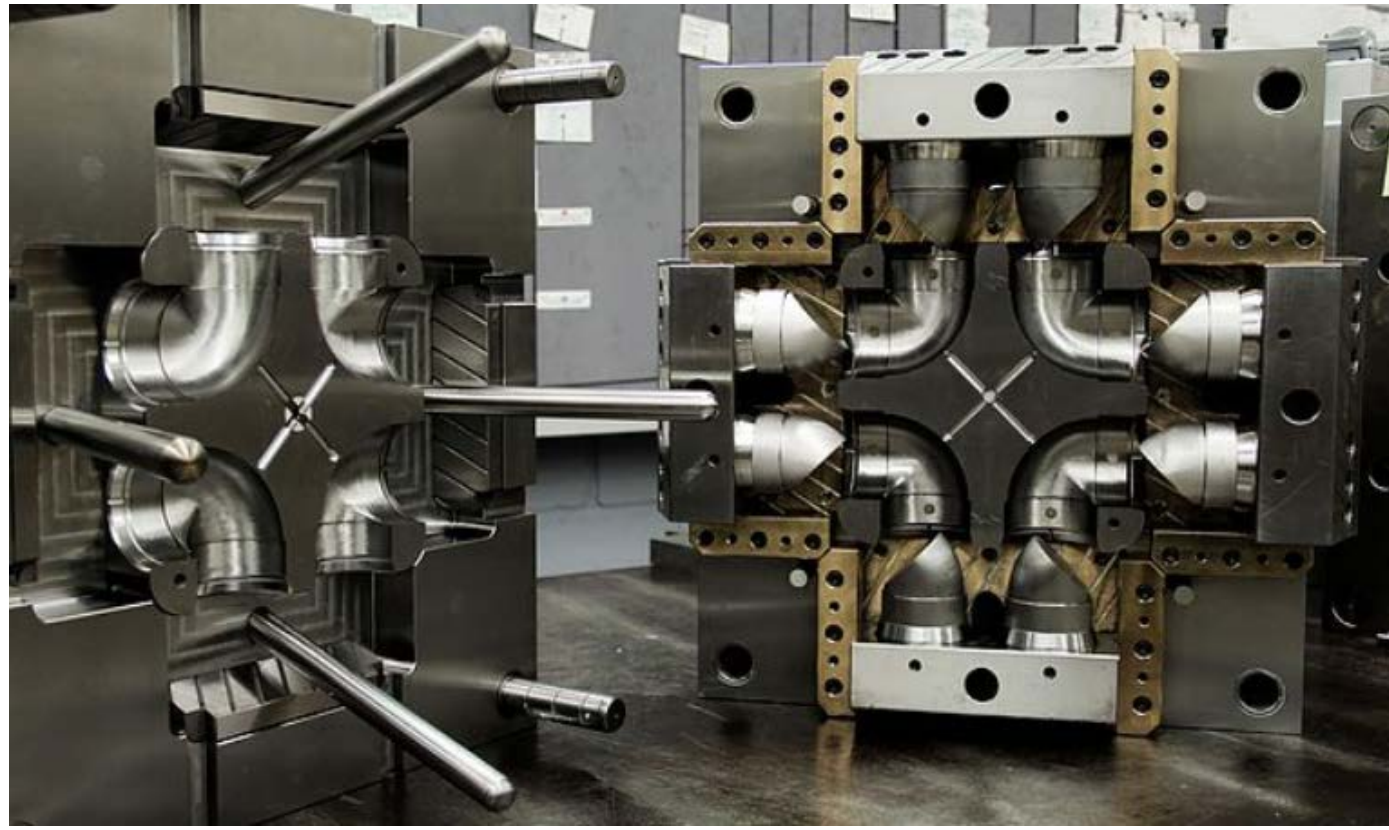
NEW MOLDES MENDOZA'S FACILITIES

In use from june 2013.

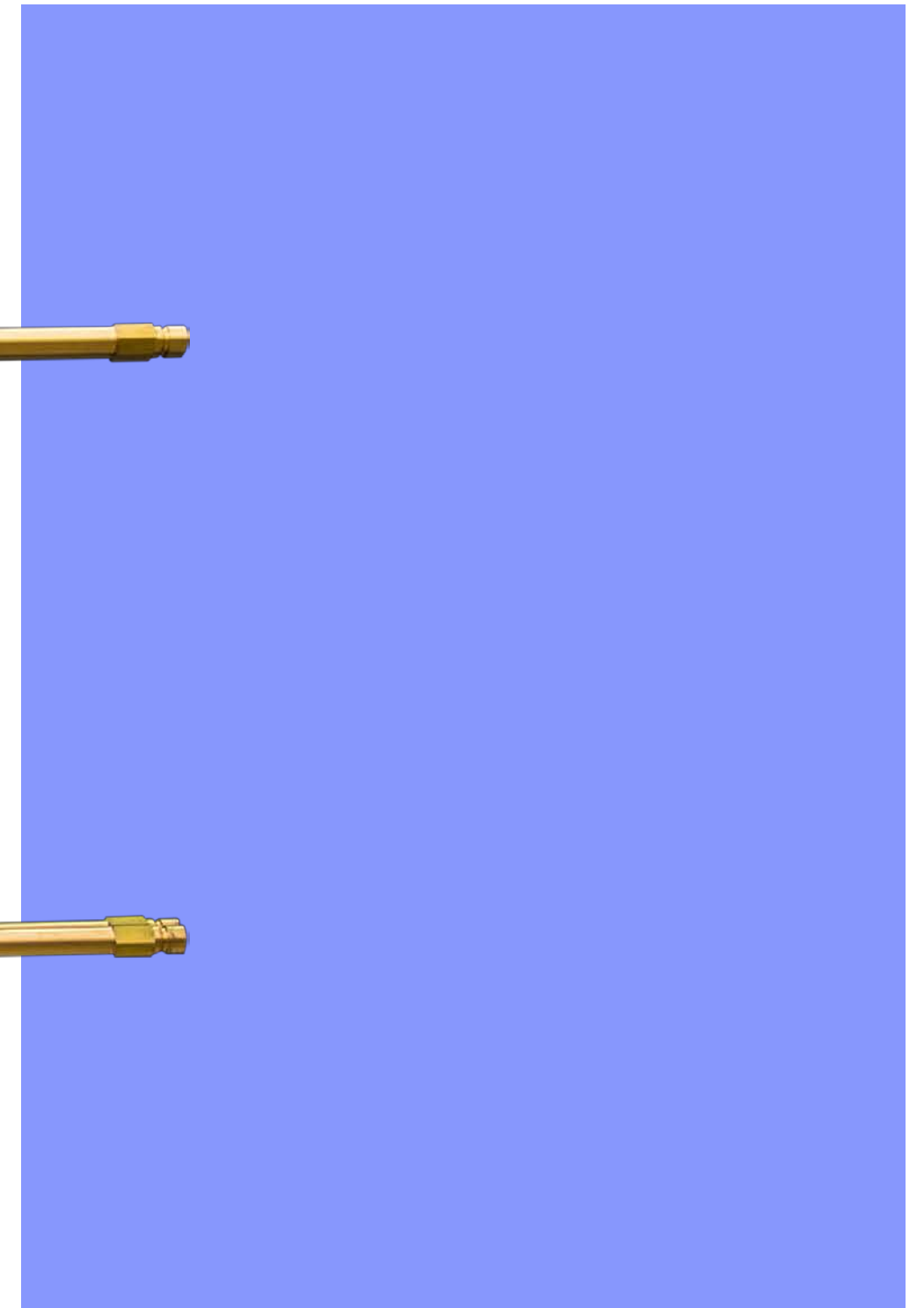
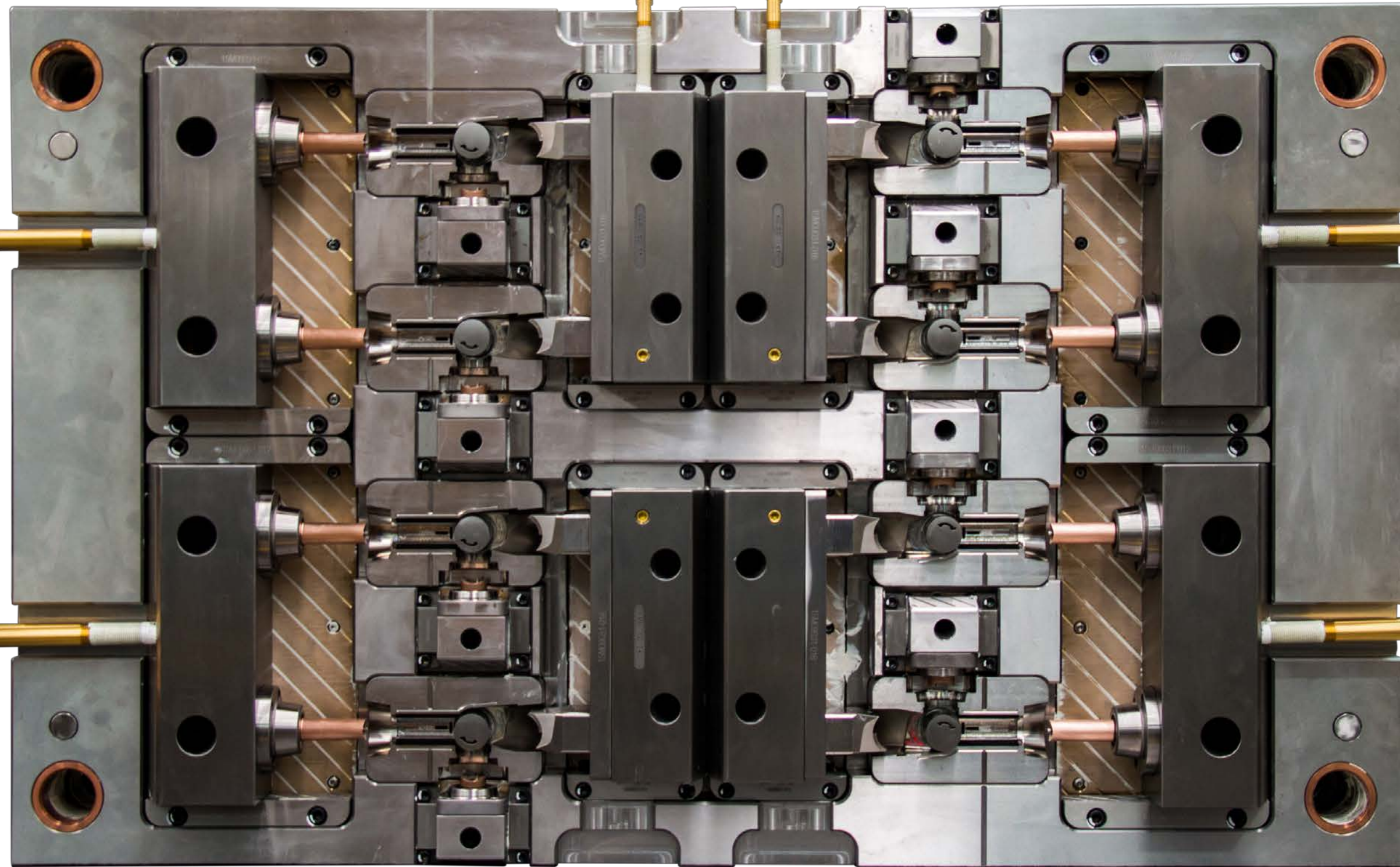
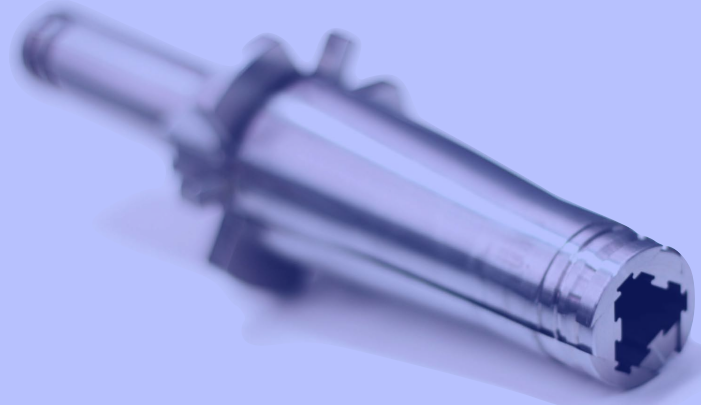


**PART
OF OUR
FACILITIES**





SPECIALIZED IN AUTOMATIC MOLDS FOR
HIGH VOLUME PRODUCTION



PRODUCTS FOR THE INDUSTRY:

- CLOSURES: FLIP TOP, CAP AND COLLAPSIBLE CORES.
- AUTOMOTIVE: ABS SENSORS, HOUSINGS, OVERMOLD.



PRODUCTS FOR THE INDUSTRY:

- REFRACTORIES, HERMETIC CONTAINERS, THIN WALL CONTAINERS.
- COSMETIC PRODUCTS.
- SANITARY, PHARMACEUTICAL, ETC



SOME OF OUR CUSTOMERS



SOME OF OUR VENDORS



a subsidiary of  Mitsubishi Corporation



SOFTWARE



PowerMILL

PowerSHAPE



The Right Choice

CAMWorks 2017



NX CAM



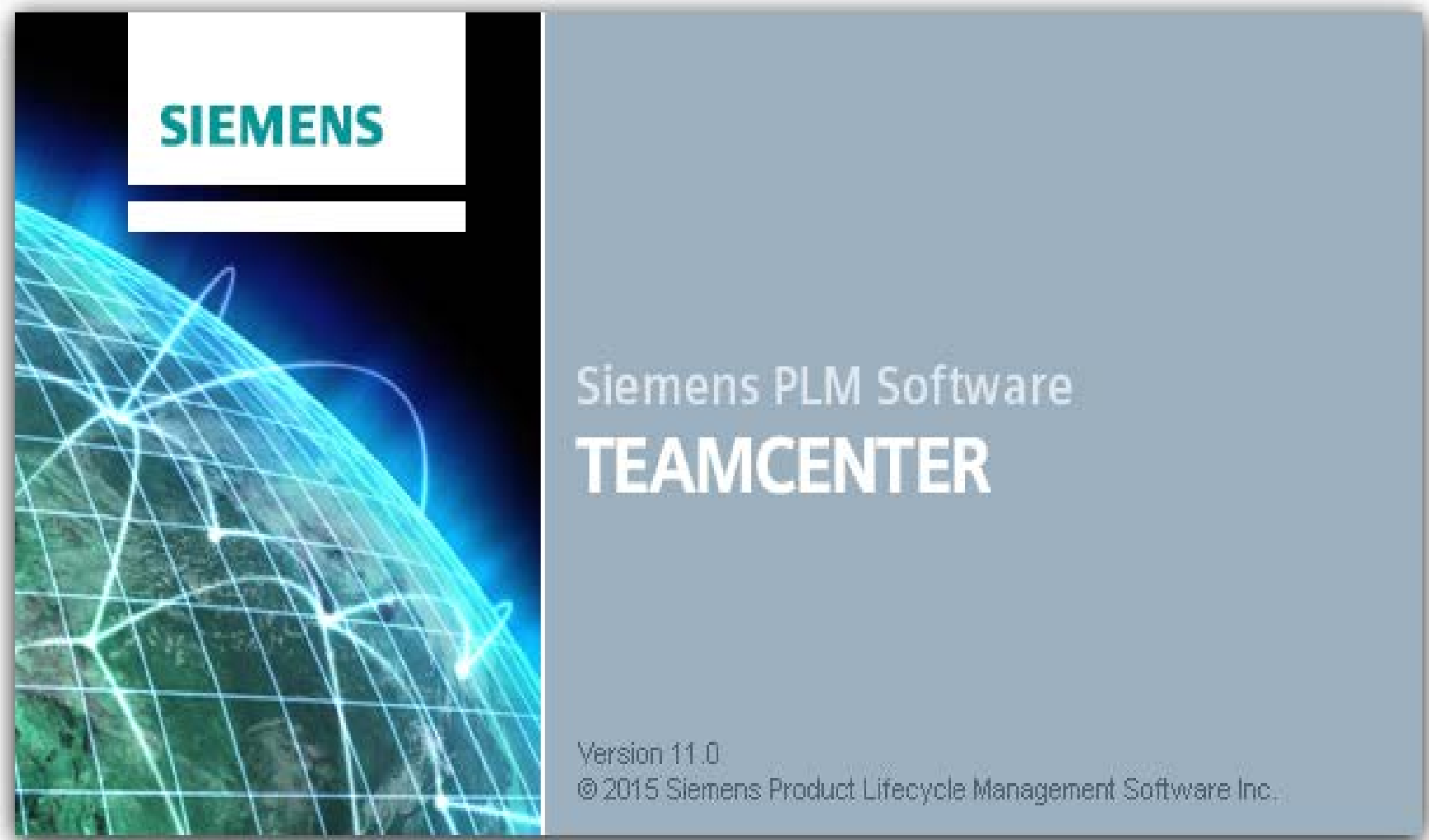
SOFTWARE

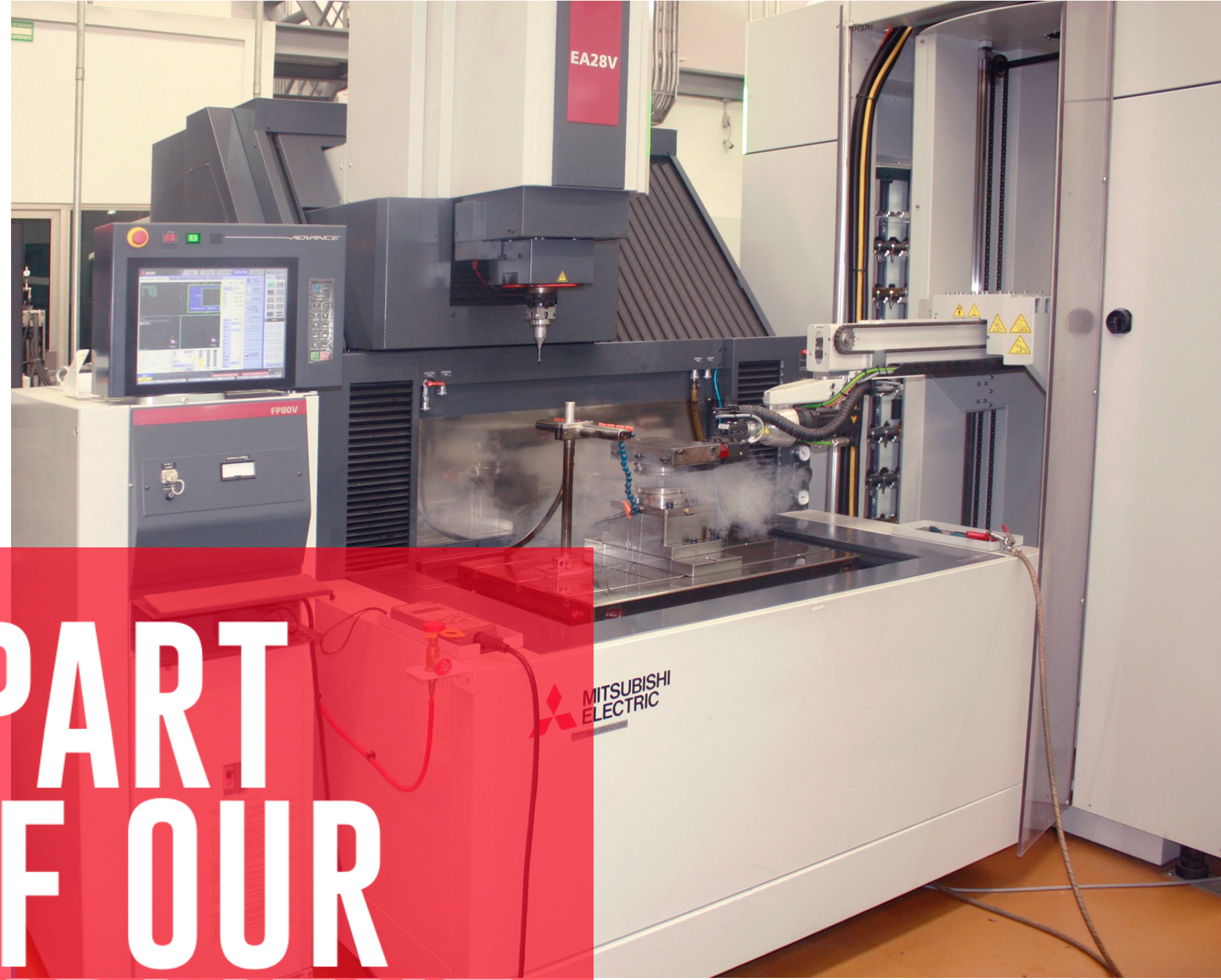
BUSINESS SOFTWARE

Synergy

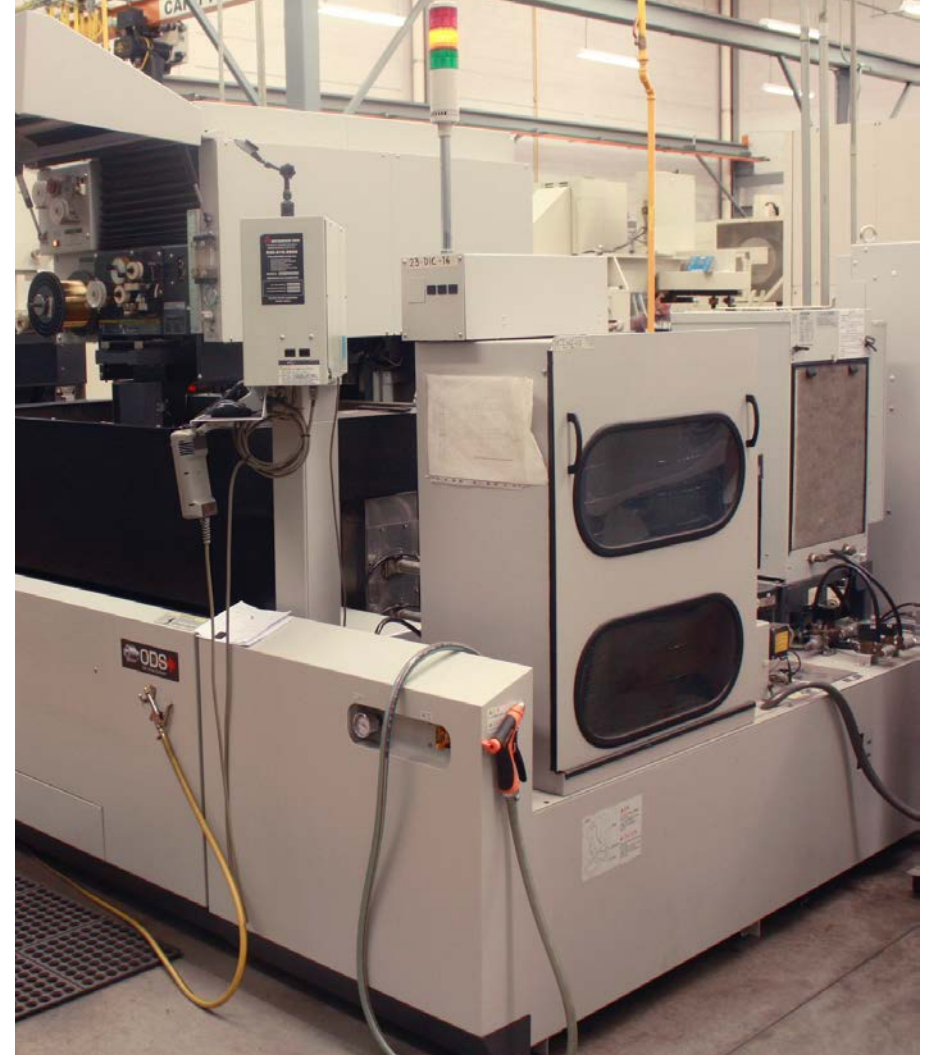
JobBOSS

= exact





PART OF OUR EQUIPMENT



Conventional Equipment

Cant	Descripción	Dimensiones
1	BOYAR-SHULTZ H612 CHALLENGER Surface Grinder	6" x 12" x 12"
1	OKAMOTO Surface Grinder	6" x 12" x 14"
1	OKAMOTO 20-40 EX Surface Grinder	20" x 40" x 14"
1	OKAMOTO OD & ID NC Cylindrical Grinder	Ø 300 mm
1	VAN NORMAN Mill	3 HP 11" x 34" x 18"
1	BRIDGEBORT Mill	2 HP 11" x 34" x 18"
1	OKAMOTO 1224	X 12" Y 24" Z 11"
1	SAKAZAKI Single Lip Cutter Grinder	1/8" to 1/2" Ø
1	EMPIRE Sand Blaster	
1	MITSUBISHI Hole Popper EDM ED 2500M	
1	Band Saw	6" x 15"
1	REC_PLANA	8" x 20" x 12"
1	KENT USA Manual Lathe	16" Swing x 40" Centers
1	KENT USA MILL	3 HP 13" X 40" 18"
1	VIWA MILL	3 HP 13" x 40" x 18"

CNC Equipment-1

Cant	Descripción	Dimensiones
1	MITSUBISHI EX22-EDM 8 position tool changer	60 Amp. 19" x 15" x 12"
1	MITSUBISHI EA12-EDM 15 position tool changer	60 Amp. 19" x 15" x 12" Caxis
1	MITSUBISHI FX20K Wire EDM	25" X 19" X 12"
1	MITSUBISHI MV 2400R Wire EDM	23.6" x 15.7" x 12.2"
1	DV-800 MITSUBISHI HI ELECD VERTICAL MARCHING CENTER	X 20" Y 32" Z 24"
1	OKUMA MC-50VA Vertical CNC Mill	40" x 20" x 20"
1	OKUMA MX-560V Vertical Machining Center	60" x 24" x 20"
1	ROKU-ROKU HC-658 High Speed Machining Center	32,000 RPM 20" x 16" x 20" 4th axis
1	ROKU-ROKU HC-548EX Hard Milling and Graphite Milling	32,000 RPM 16" x 16" x 20" 4th axis
1	EROWA ROBOT COMPACT 80 Position tool charger	
1	1 MITSUBISHI EA-28V EDM	650mm x 400mm x 340mm

CNC Equipment-2

Cant	Descripción	Dimensiones
1	MAKINO F5 Vertical machining center	20,000 RPM 35.4" x 19.7" x 17.7" 3th axis
1	OKUMA LB-8 CNC Lathe	Ø8.0" X 19"
1	OKUMA L400 CNC Lathe	Ø10.0" X 19"
1	TECHNI DRILL Gun Drill	24" X 16" X 45" Ø 1/8" to 1"

Measuring Equipment-1

Cant	Descripción
1	ROCKWELL Hardness Tester A,B,C
1	MITUTOYO 14 HEIGHT GAUGE
1	MITUTOYO 24 Height Gauge STARRET
	Block Gauges .05000 A 4.0000
	Micrometers 0.5 up to 8.00

Measuring equipment-2

Quantity	Description
1	Stereoscope Vision 4X, 8X
1	OGP Optical Comparator
1	ZEISS CMM CONTURA G2
1	MICRO-Vu Vertex 311VC

Engineering software

Type	Description
CAD	NX Modeling, Solidesigner, PowerSHAPE, CADKEY
CAM	NX Manufacturing, PROCAD, PowerMILL, CAMWorks Solid, Esprit
Job Shop	Exact JobBOSS, Exact Synergy

In house plastic injection molding machines

Description
Nissei 60, 80, 110,120, 180 and 220 Ton. Machines
ARBURG 200 and 100 Ton. Machines

MOLDES



Mendoza

Av. Aviación No. 5051, Bodega #30 A
Col. San Juan de Ocotán 45019 Zapopan, Jal. México.

E-mail: ventas@mmz.mx

<https://mmz.mx/>